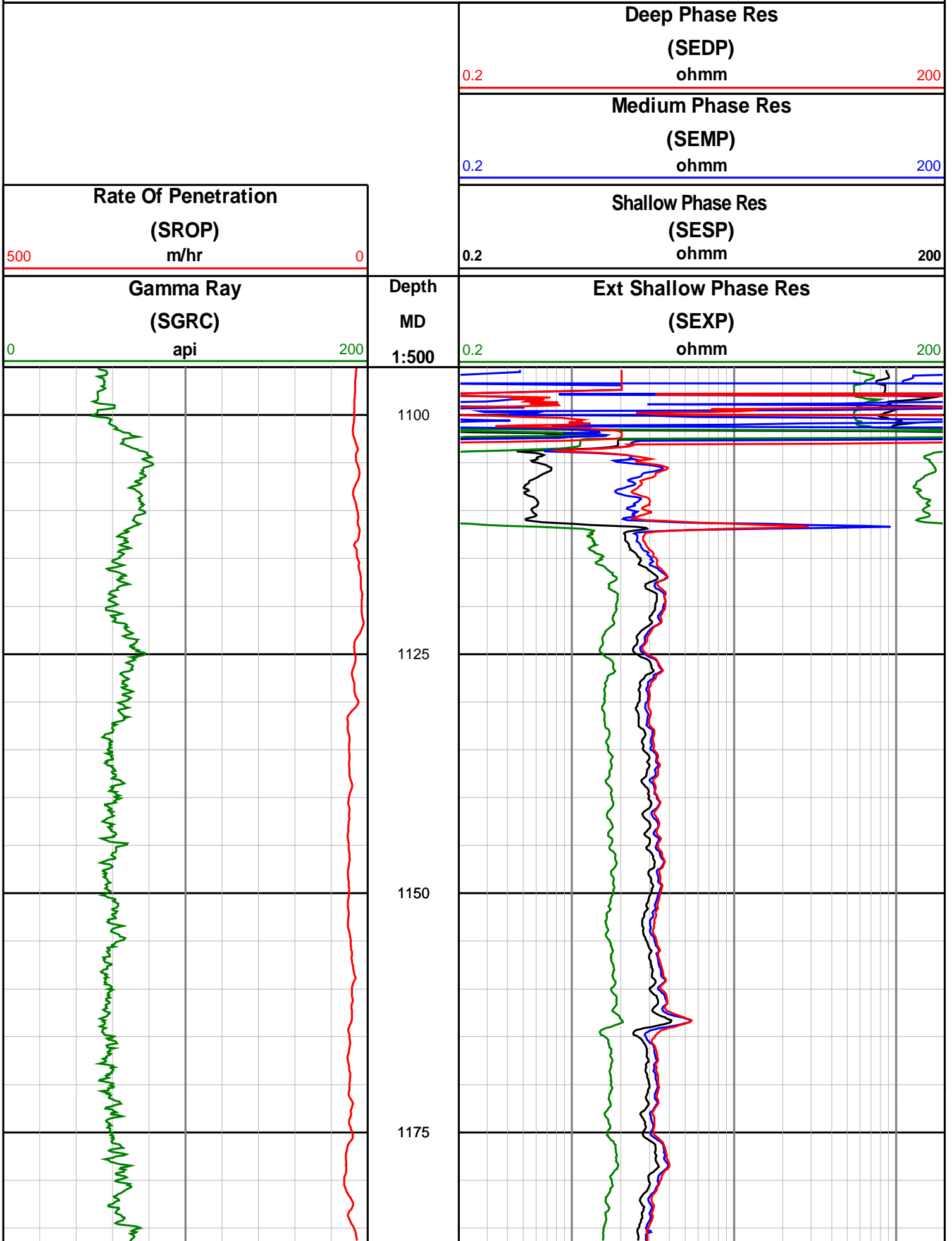


Anzon Australia Ltd

Basker-3

Recorded/Realtime LWD Log (Permanent Datum - LAT)





1200

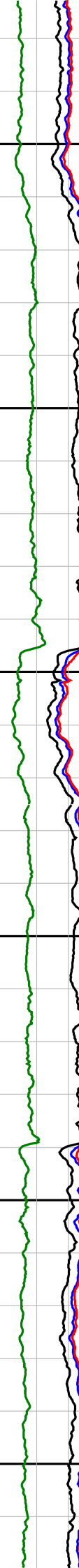
1225

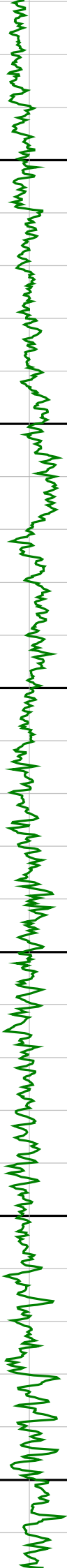
1250

1275

1300

1325





1350

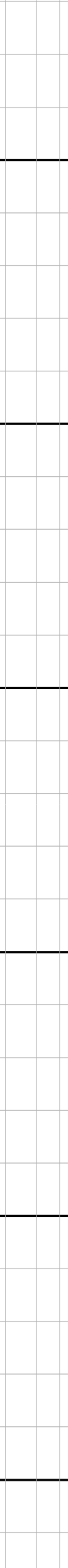
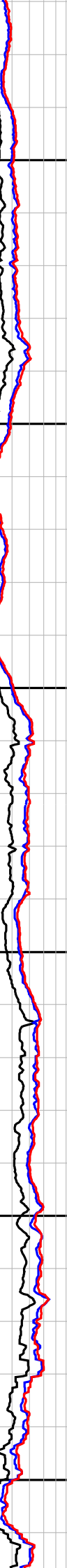
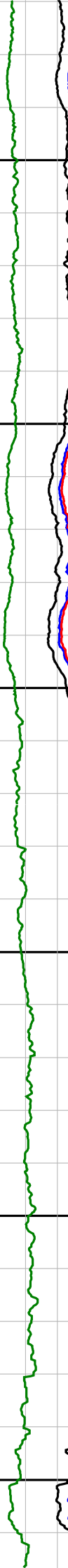
1375

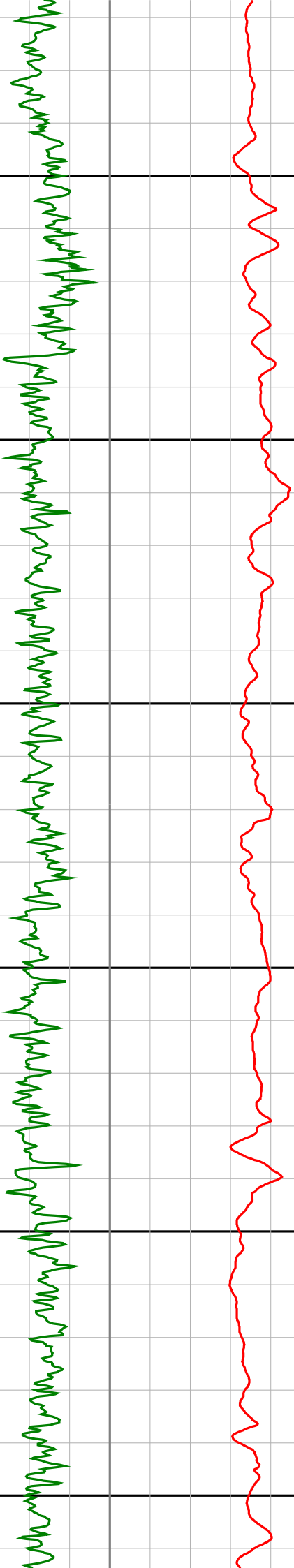
1400

1425

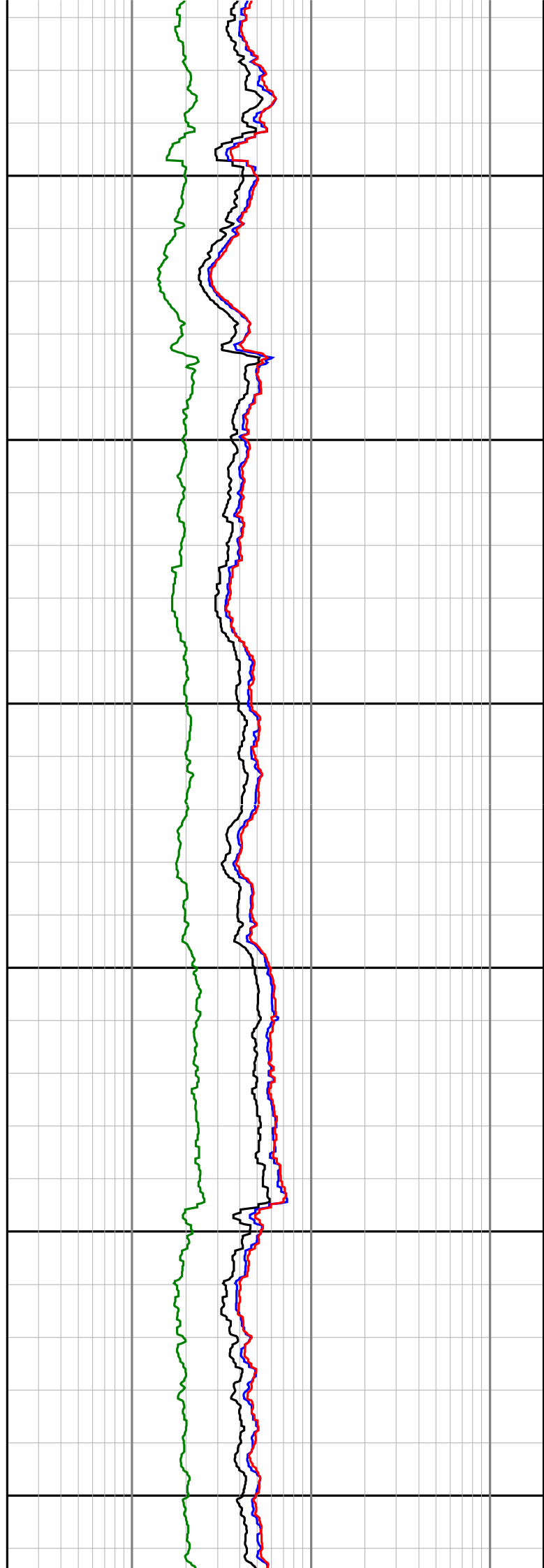
1450

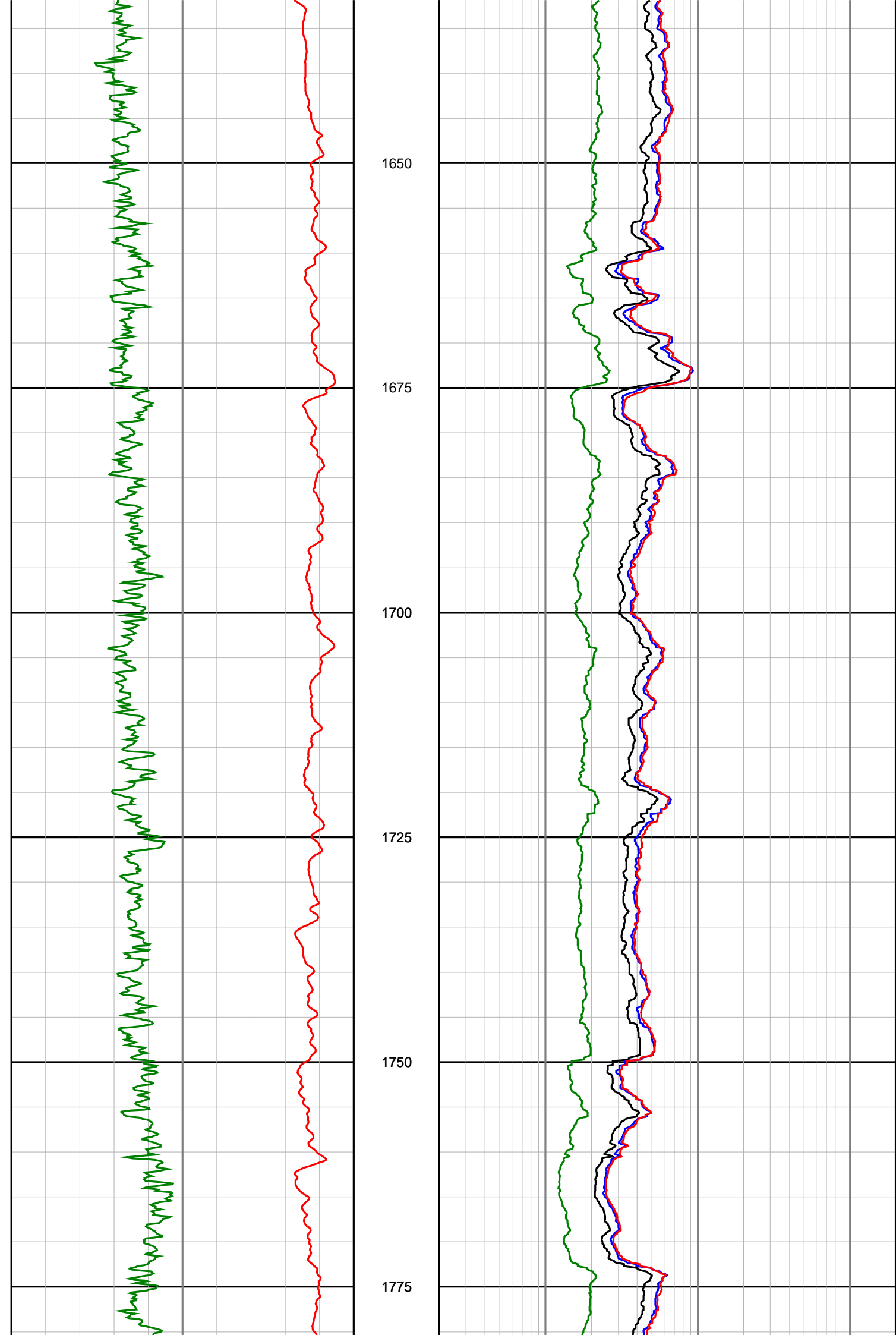
1475

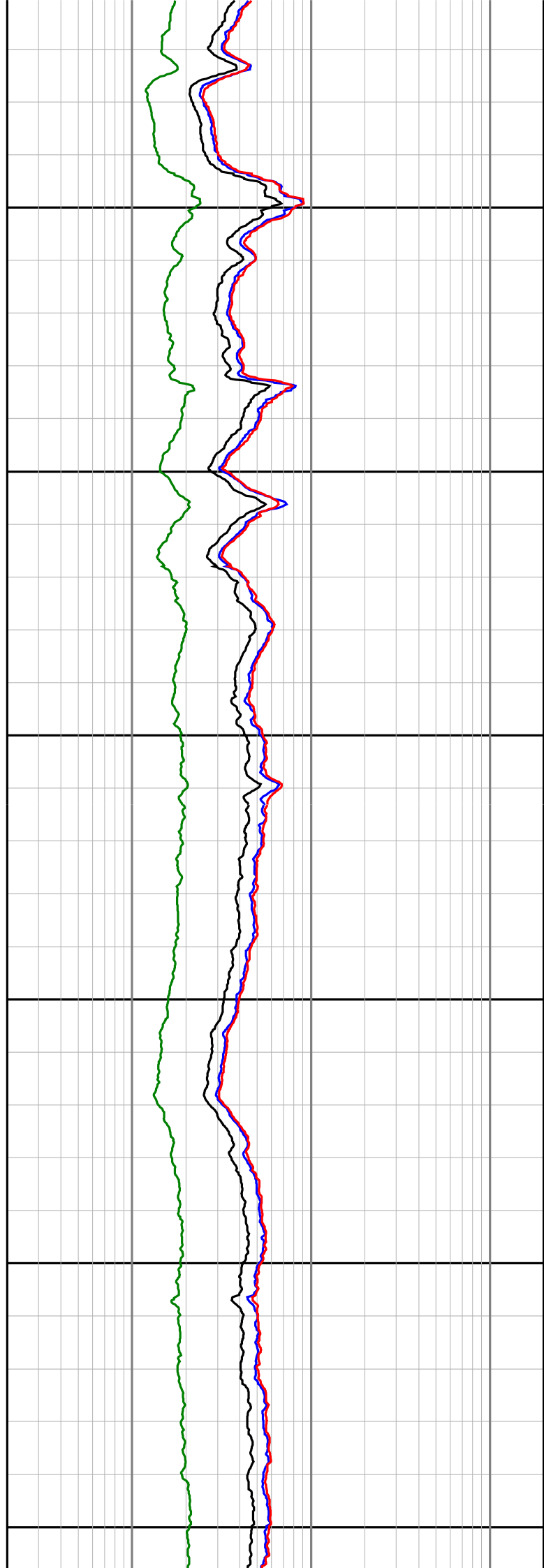
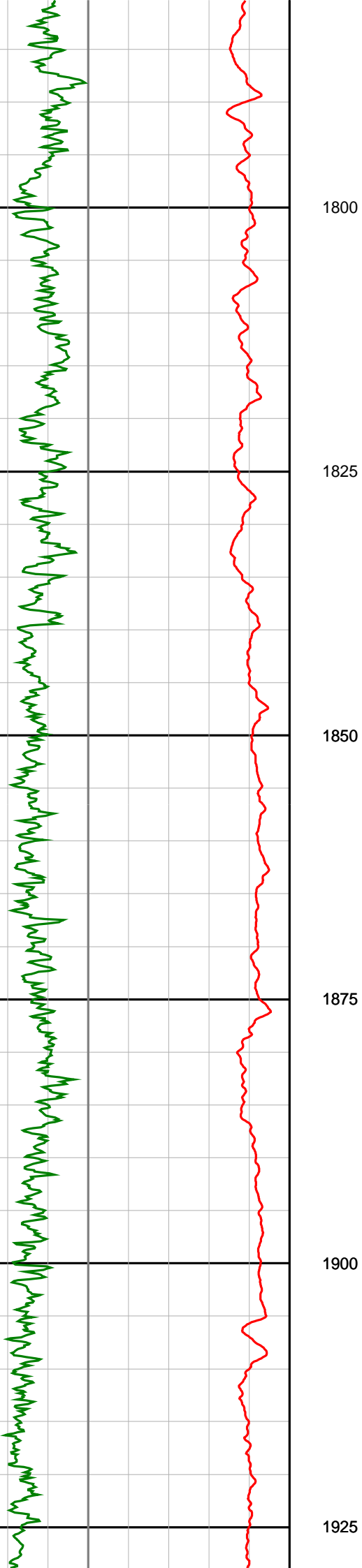


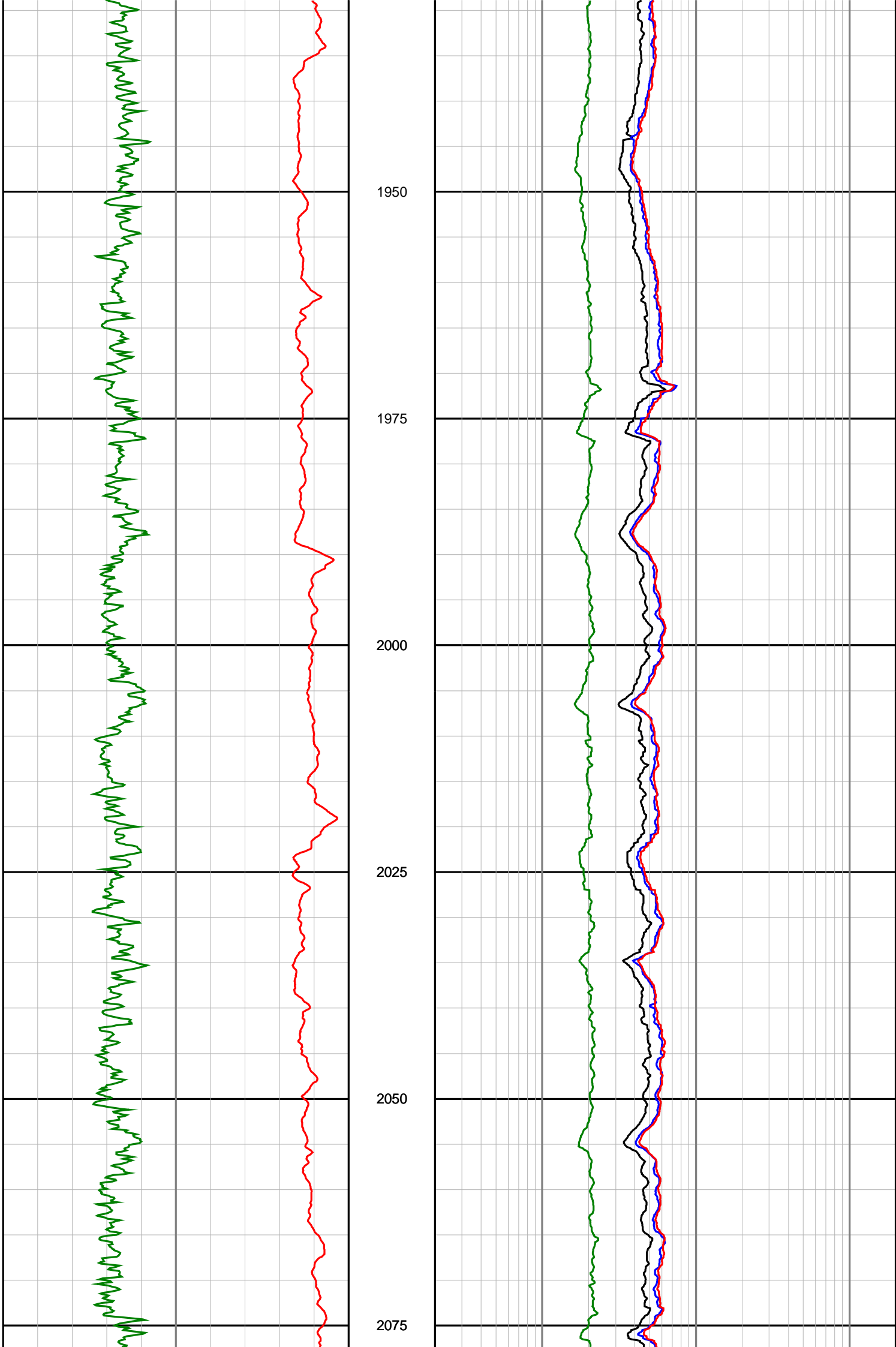


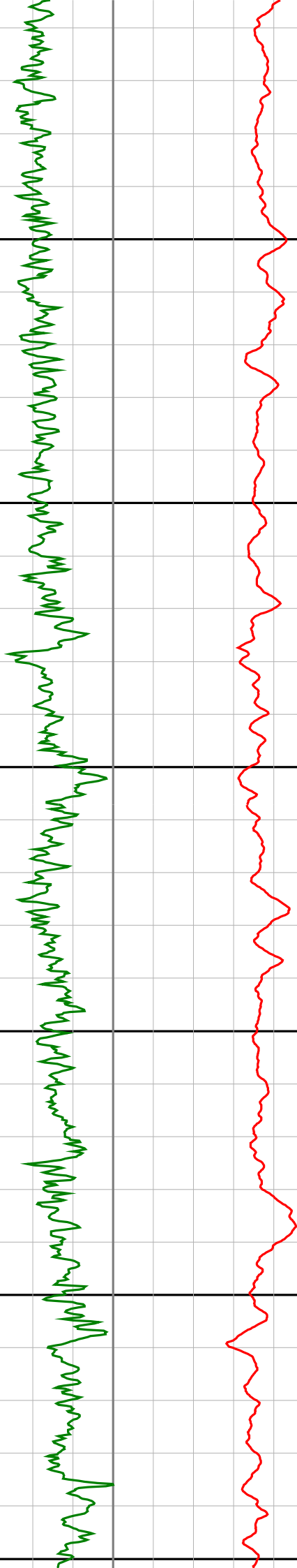
1500
1525
1550
1575
1600
1625











2100

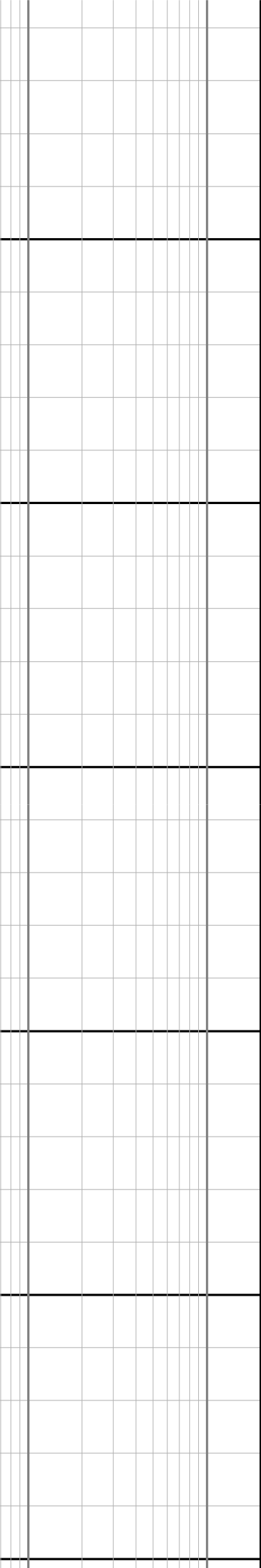
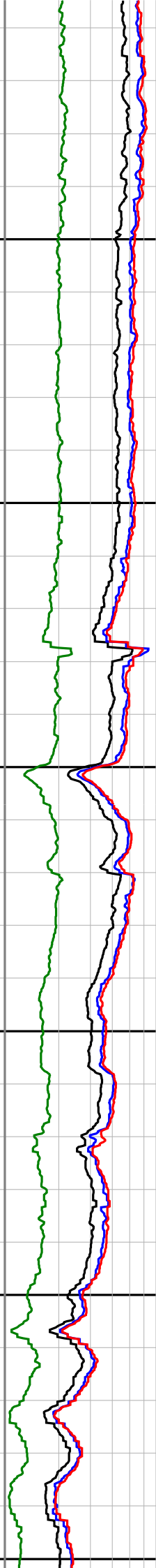
2125

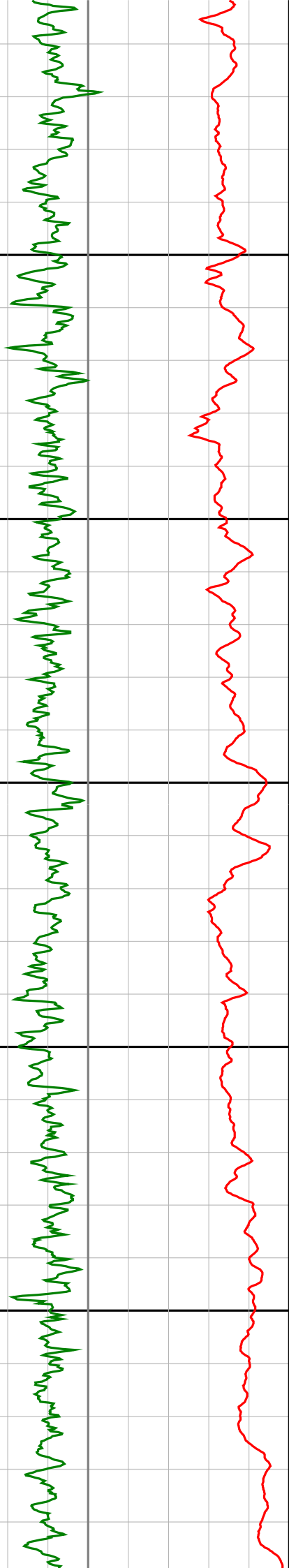
2150

2175

2200

2225





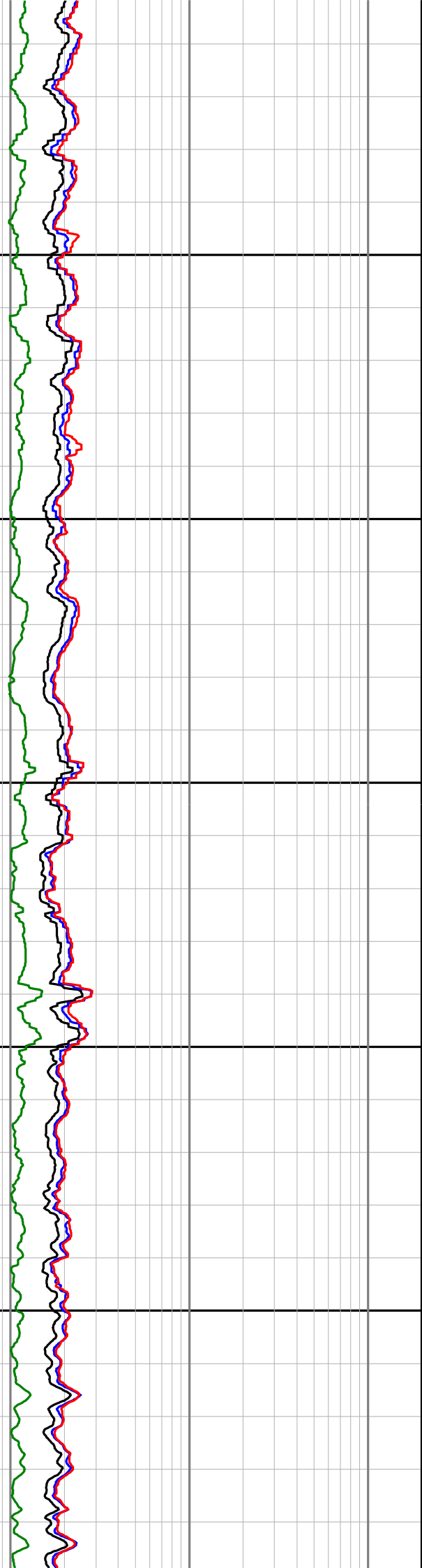
2250

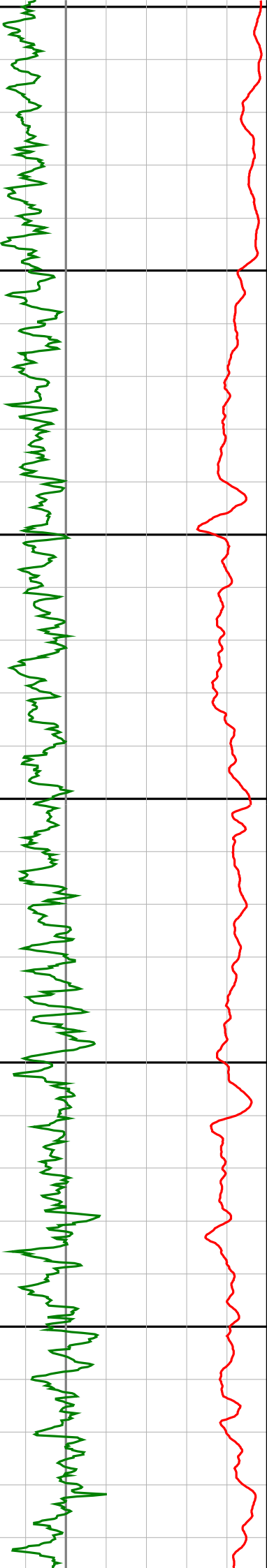
2275

2300

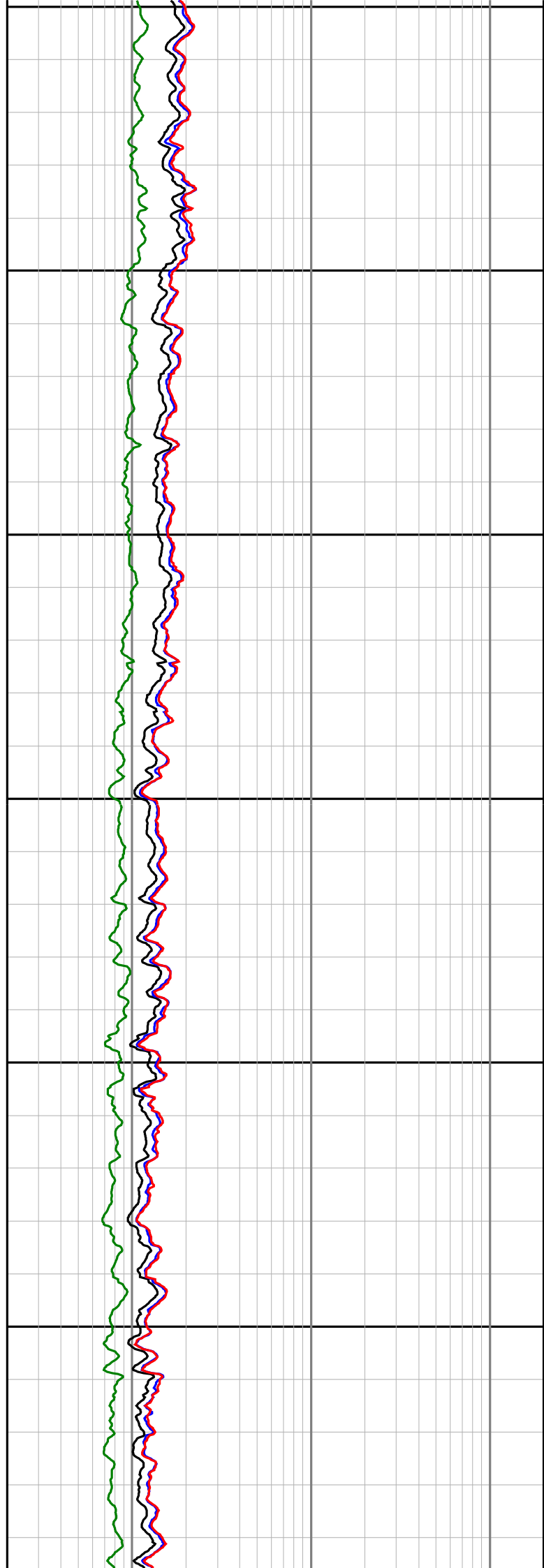
2325

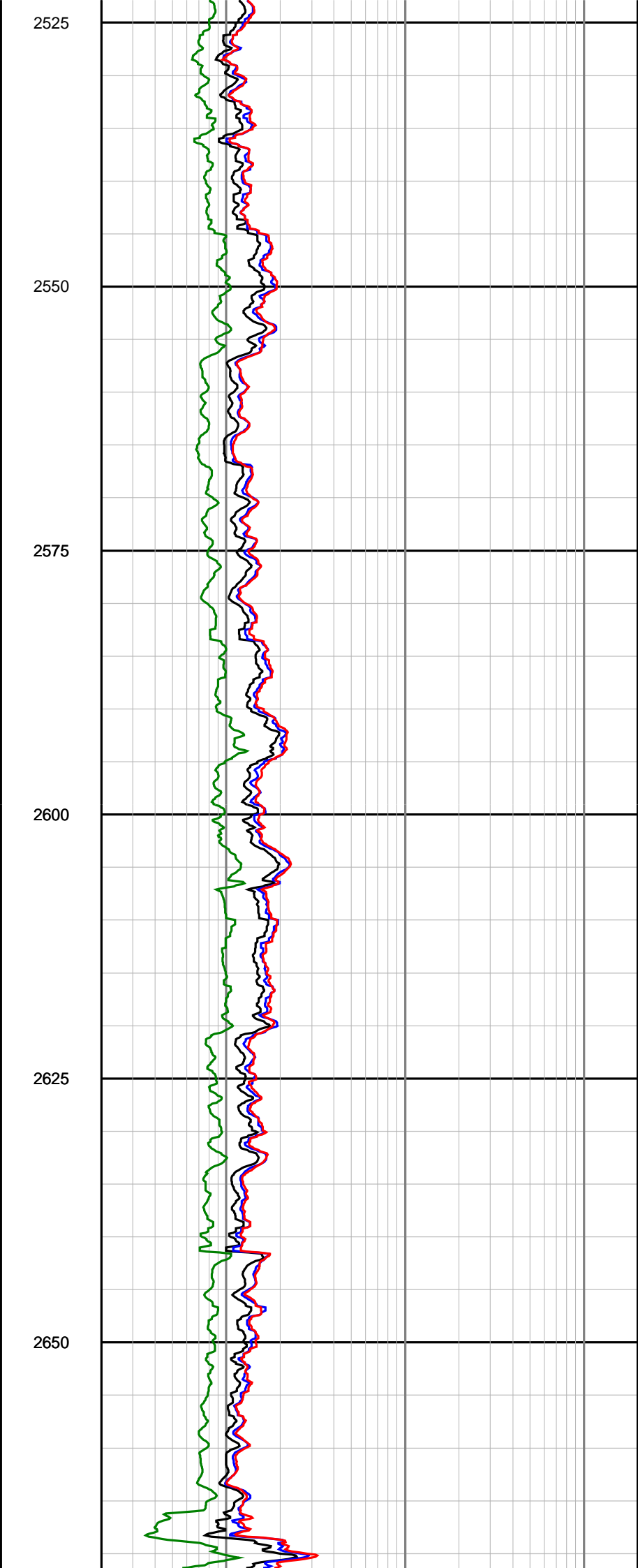
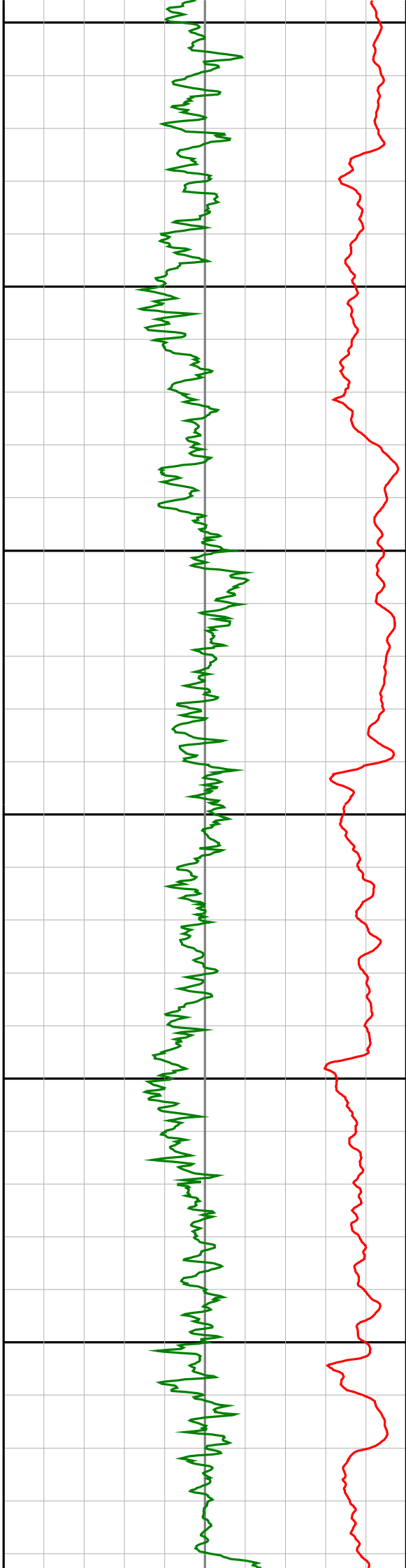
2350

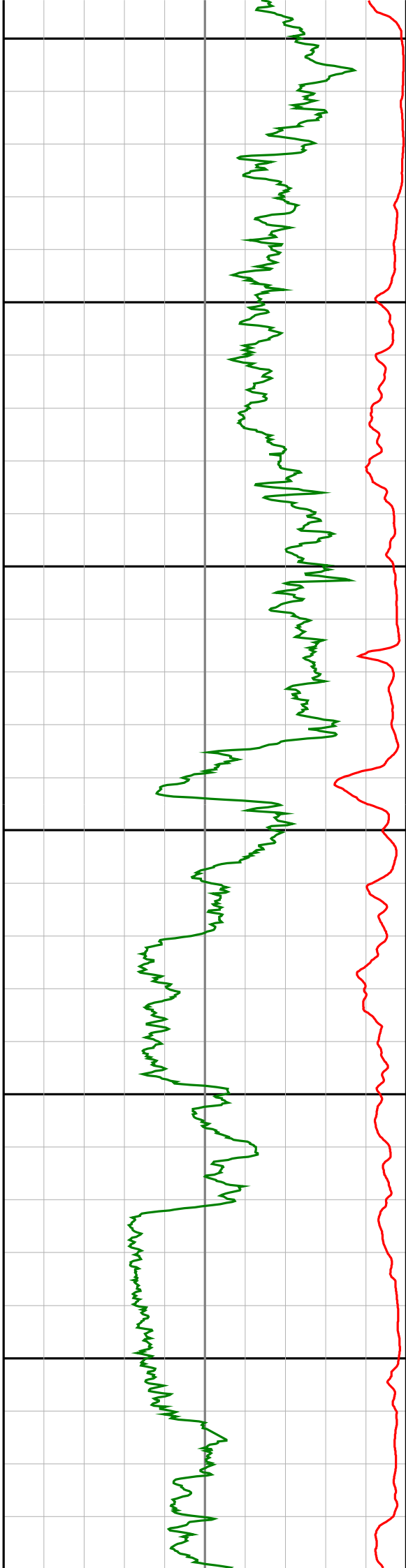




2375
2400
2425
2450
2475
2500







2675

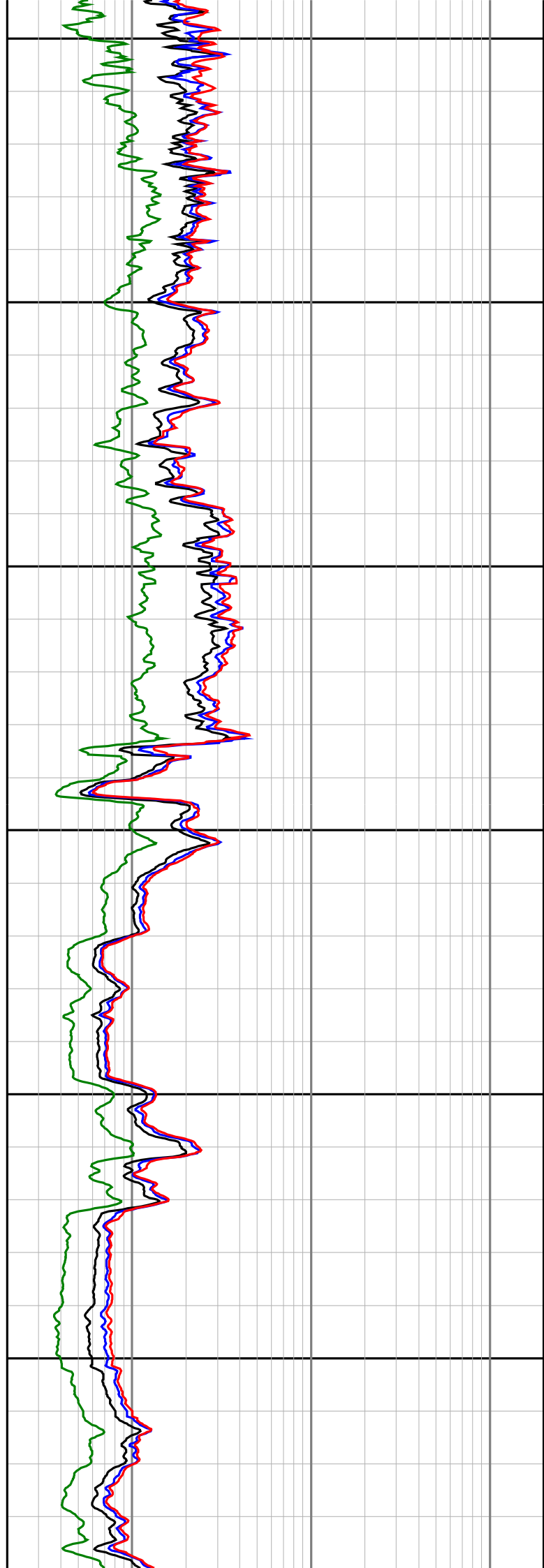
2700

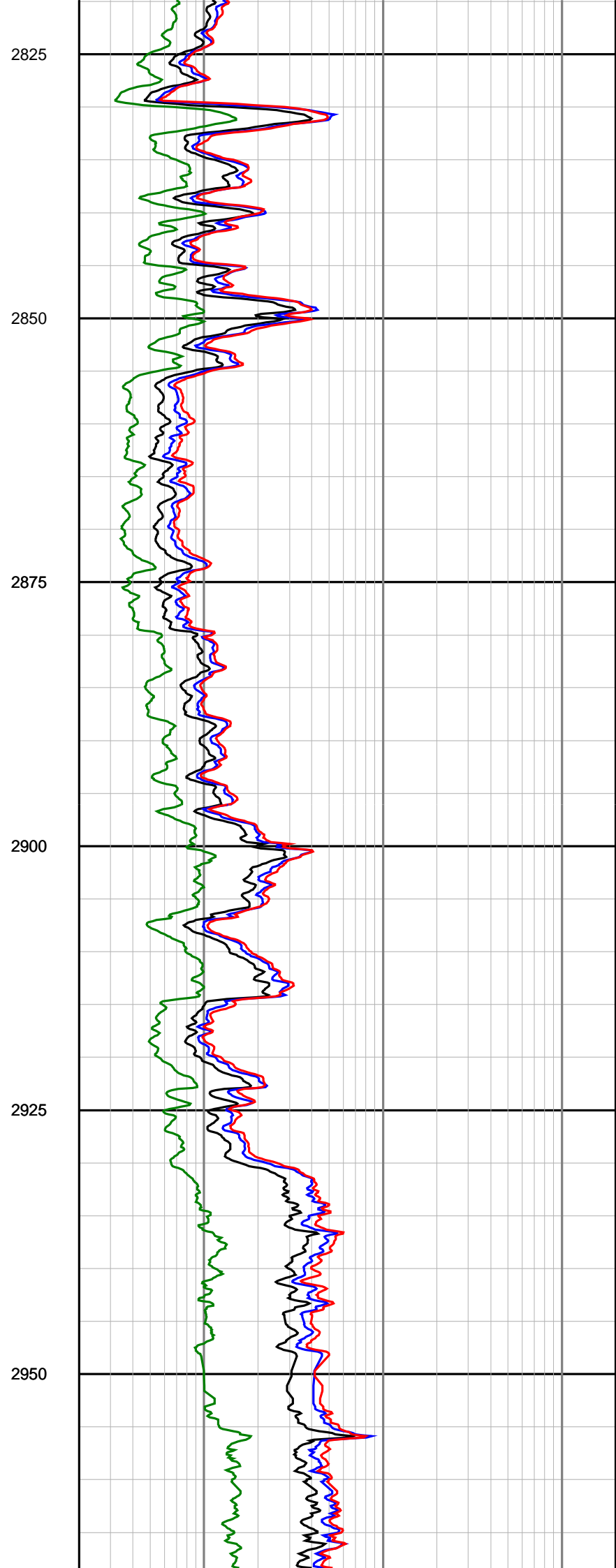
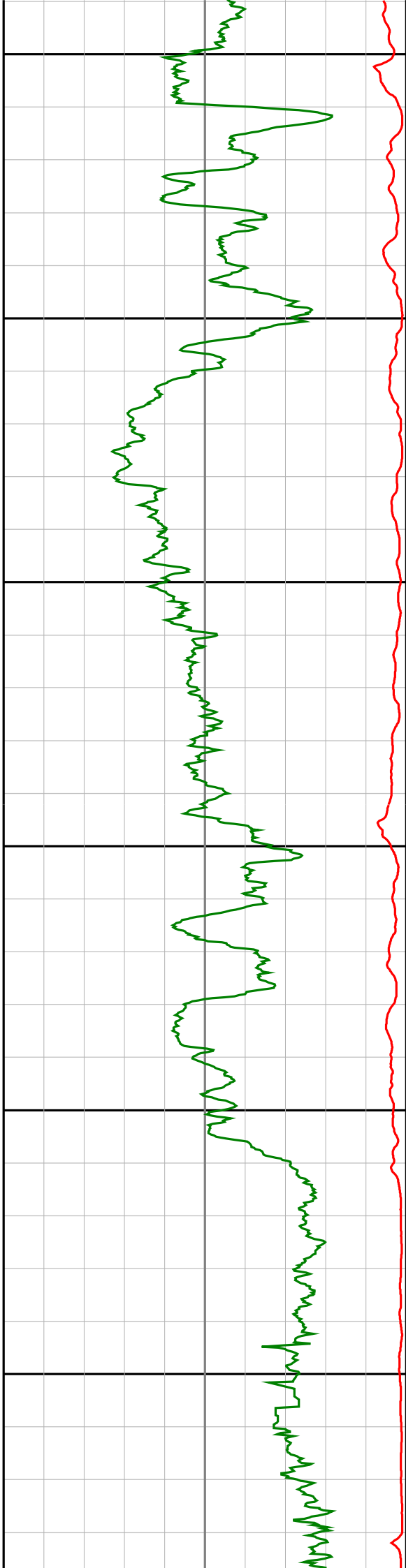
2725

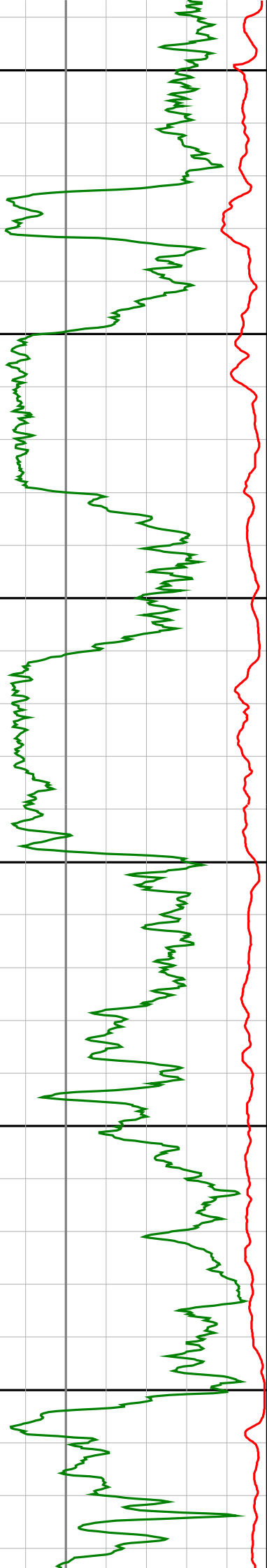
2750

2775

2800







2975

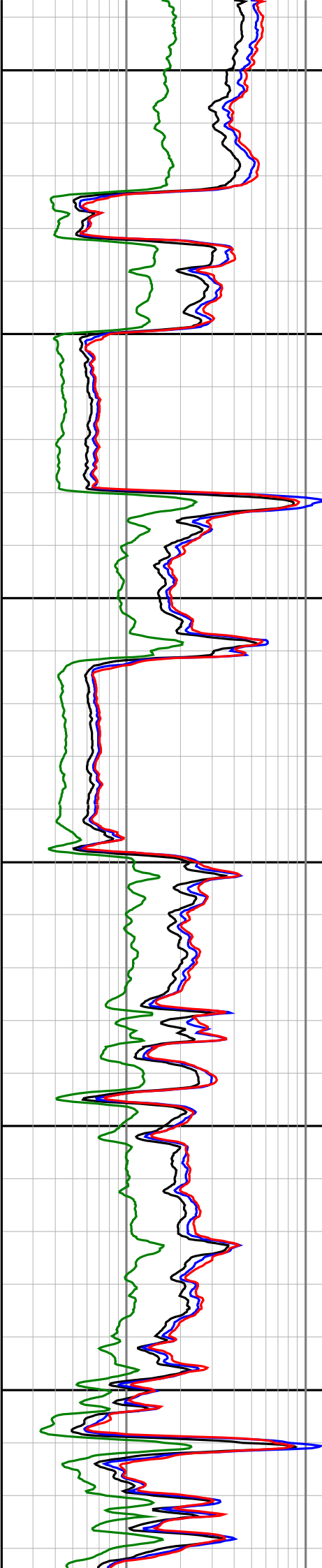
3000

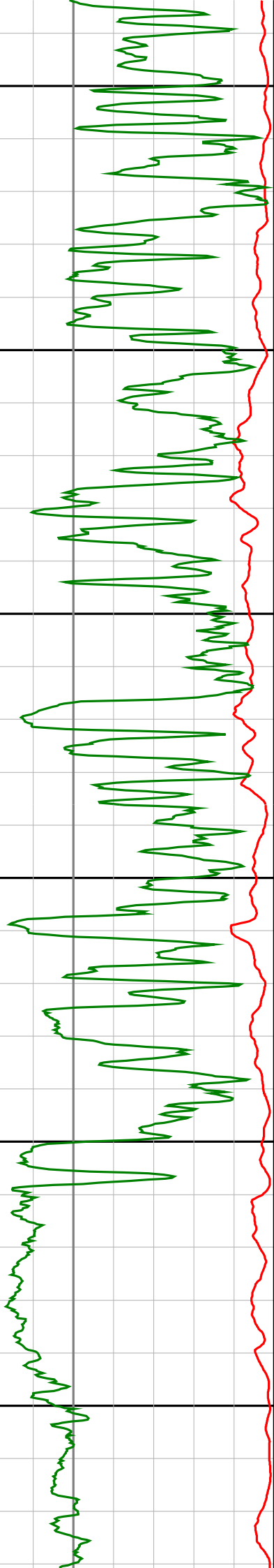
3025

3050

3075

3100





3125

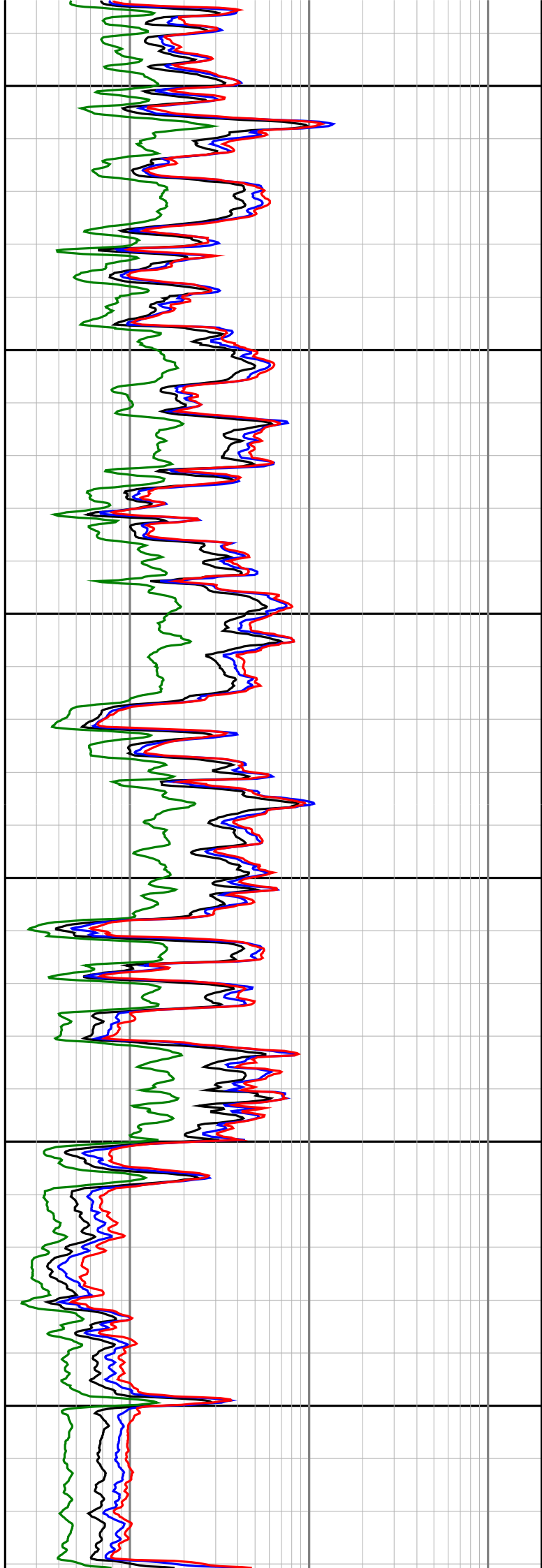
3150

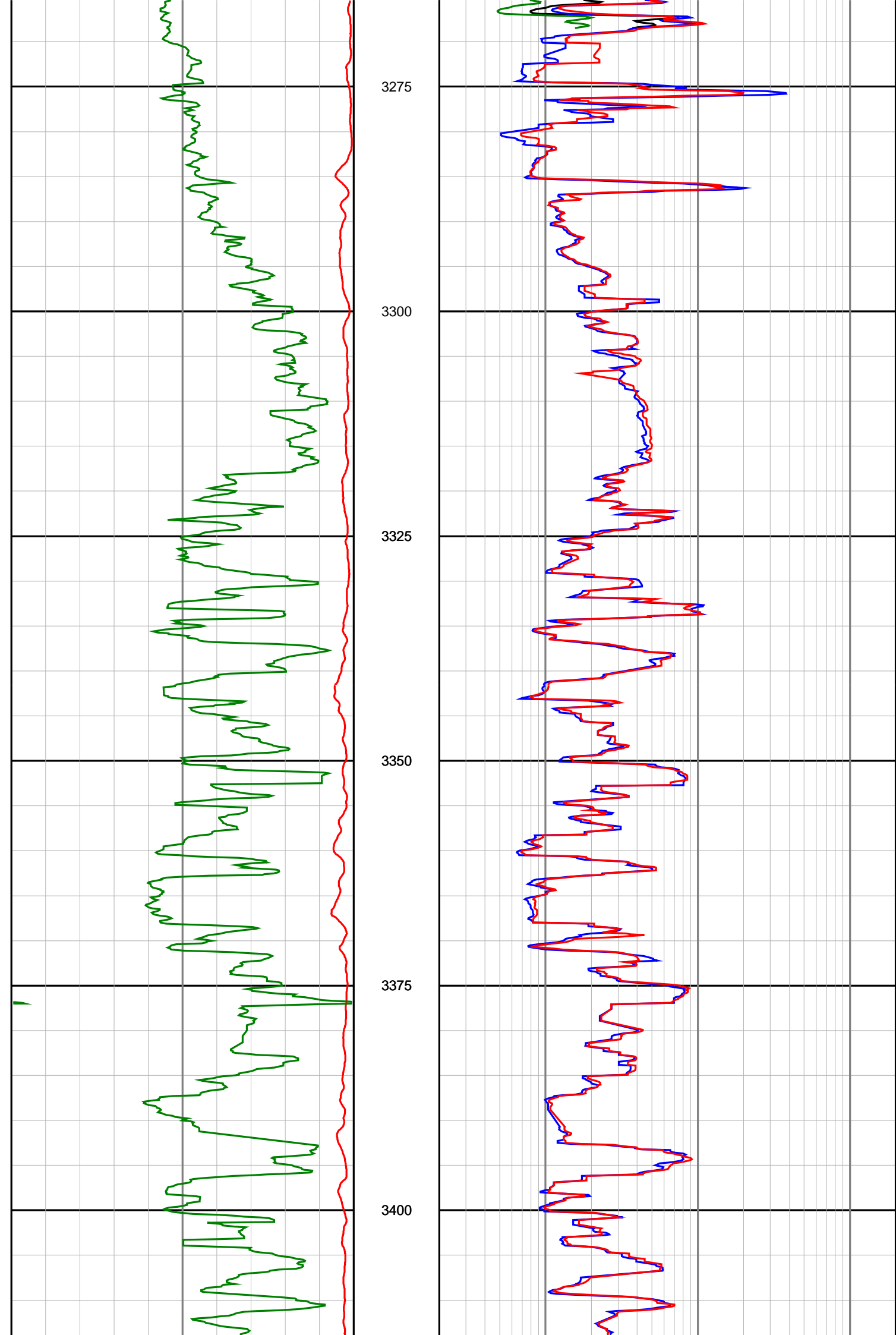
3175

3200

3225

3250







3425



<p>Gamma Ray (SGRC) api</p> <p>0 200</p>	<p>Depth MD 1:500</p>	<p>Ext Shallow Phase Res (SEXP) ohmm</p> <p>0.2 200</p>
<p>Rate Of Penetration (SROP) m/hr</p> <p>500 0</p>		<p>Shallow Phase Res (SESP) ohmm</p> <p>0.2 200</p>
		<p>Medium Phase Res (SEMP) ohmm</p> <p>0.2 200</p>
		<p>Deep Phase Res (SEDP) ohmm</p> <p>0.2 200</p>